



Big Dutchman[®]



NATURA **Nova**

The modern aviary system for
barn, free-range and organic egg production

NATURA Nova – economic, animal-friendly and compliant w

NATURA Nova is a Big Dutchman aviary system that has been tried and tested for many years now. The system is mainly characterised by the connection between the nest and the aviary itself.

This has the following advantages:

✓ the hens can easily reach the nest,

making for high nest acceptance;
✓ the pullets quickly get used to the aviary after they are moved because water and feed are easy to find;
✓ the farm staff uses the elevated connection/inspection aisle for an ideal overview and for monitoring;

✓ 100% of the house surface area is used as scratch area, thus providing much room for movement and allowing an optimum stocking density.

NATURA – a trademark for intelligently structured aviary systems

NATURA is a trademark that stands for animal-friendly aviary systems. Thanks to the ideal arrangement of nests, feed lines and drinker lines, the birds use all areas of the aviary evenly and accept the nests well. Usable areas on several levels and a 100-percent utilisation of the house's surface area allow for ideal stocking densities and therefore an economic egg production.

Hygiene in the house and the hens' health are tightly connected. Manure belts below each tier ensure that the largest part of the droppings is transported from the house, regularly and with minimum effort. Additionally, ventilating the manure via air ducts further decreases the ammonia content of the house air.



NATURA Nova – various structural elements increase the hens' well-being



The hens can easily access the nest using the connection aisle

Optimum flock performance requires observing instructions on correct poultry house management. This includes using special feeding and lighting programs, dimmable house lighting with twilight phases and the correct litter material.

With Freedom Foods requirements!

The NATURA Nova 264 and 284 aviaries are two systems the customer can select depending on the height and width of the house as well as the available usable area. The following advantages apply to both systems:

- ✓ the Colony 2+ family nest offers

- ✓ sufficient space for laying eggs;
- ✓ nipple drinkers near the nests improve nest usage and reduce the number of mislaid eggs;
- ✓ a special approach perch, either galvanized or made of stainless steel, ensures that the hens perch while

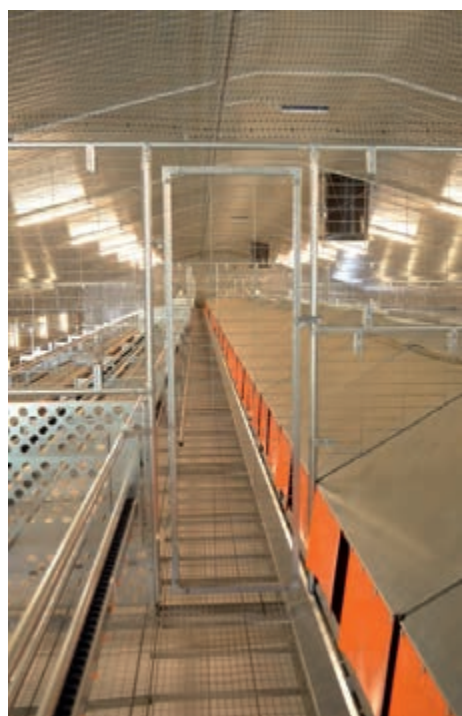
- ✓ facing the aisle, thus minimising the amount of manure in the litter area;
- ✓ an air duct (optional) dries the manure up to a dry matter content of 55 % and reduces ammonia emissions.

Clever NATURA concept with three nest rows and two inspection aisles

A special feature of these two aviary types is the third nest row. It allows for an ideal stocking density per running metre of house surface area. The feed and drinker lines installed in this row ensure that the hens accept the nests easily. Additional perches in this third row are arranged in a way that the hens can roost there quietly during the night and retreat from the other hens during the day, if necessary. The perches are mounted clearly above the usable area. Active birds will therefore not disturb resting birds, and vice versa.



Three nest rows provide sufficient space for uninterrupted egg laying and meet the requirement of more nesting areas than stipulated by the EU directive, as demanded by Freedom Foods



Inspection aisle in front of the third nest row

The well-proven inspection aisle has also been added in front of the third nest row and ensures that the nests can be easily accessed and monitored. The stairs for the end sets available from Big Dutchman guarantee that the farm staff has no difficulty climbing up and down.

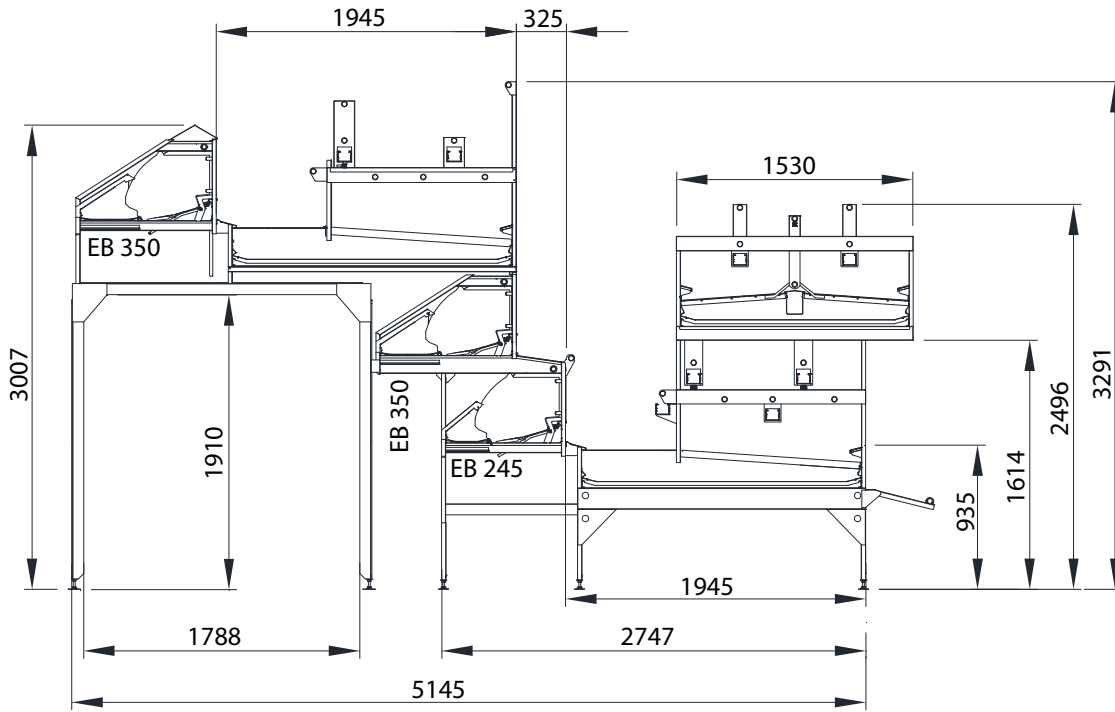


Inspection aisle in front of the first and second nest row

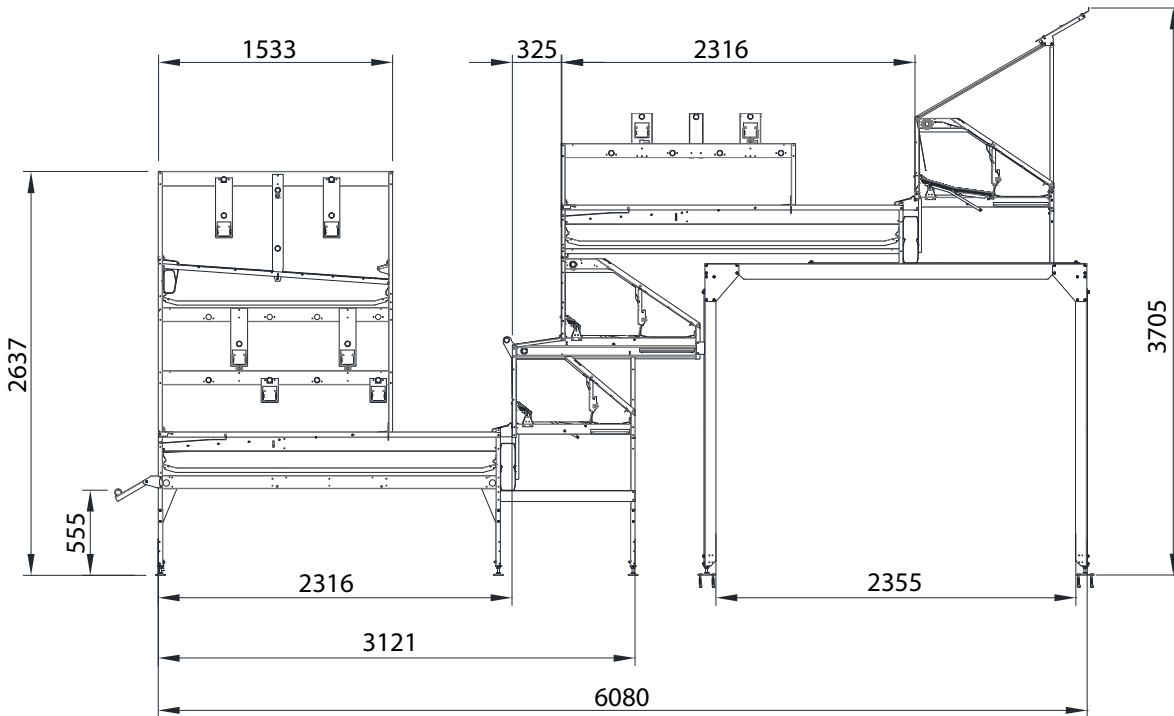


Stairs for the end sets make reaching the inspection aisles easy

NATURA Nova 264



NATURA Nova 284



Newquip Ltd.
NQ House, Conygarth Way
Leeming Bar Business Park
Leeming Bar, Northallerton
North Yorkshire DL7 9EE
Phone: +44-1677428600
Fax: +441677428601
E-mail: enquiries@newquip.co.uk