



# Big Dutchman®



## Gladiator

The rugged feed pan for rearing and growing of turkeys

# Gladiator – the optimal feed pan for successful rearing and growing

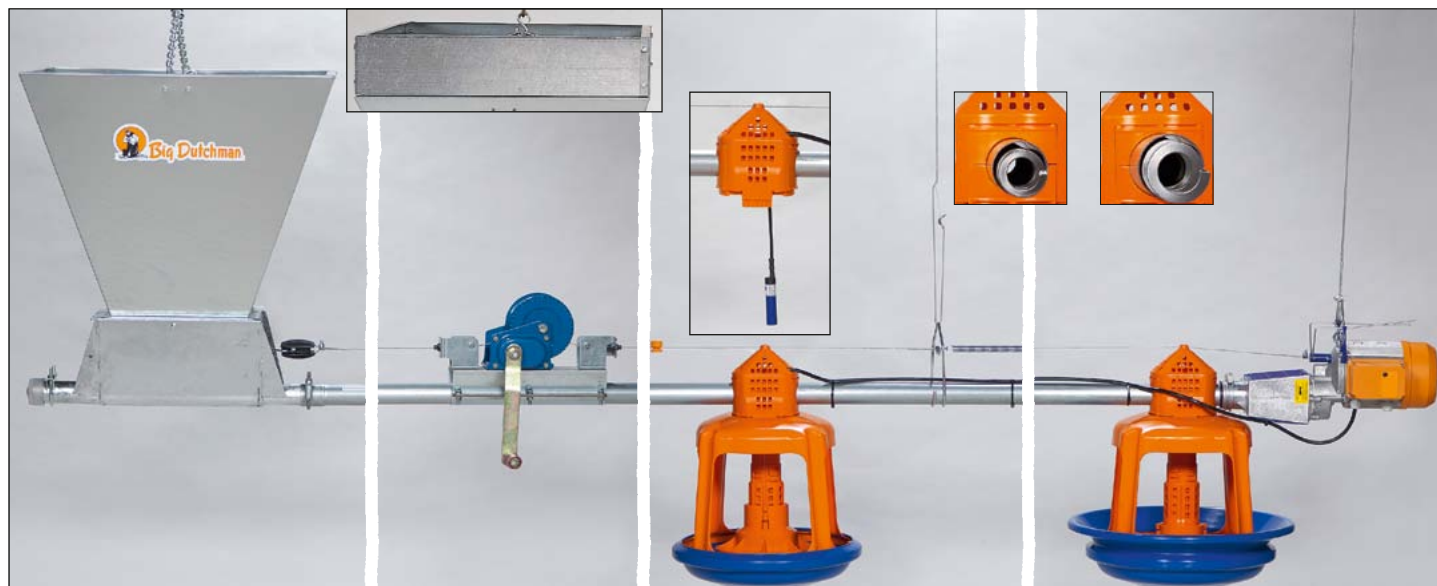
A feeding system for turkeys has to meet several different requirements which mainly depend on the production method and age of the birds. During rearing, the feed has to be easily accessible for the poults; later on, in the growing phase, feed wastage has to be prevented. In male

rearing, the pan as well as the entire feeding system has to be especially robust. After each grow-out, it is important that the pans can be cleaned thoroughly and without too much labour. With Gladiator, we can offer our customers a feed pan that meets all the requirements

of a modern feeding system in an ideal way. The Augermatic conveying system ensures the reliable transport of feed, adapted to the requirements on a farm thanks to different conveying capacities (Ø 45, 50.8, 60 mm) and uniform filling of all pans in a feed line.

## Components of the feeding system

- ✓ feed hopper
- ✓ extension for feed hopper (optional)
- ✓ feed tube with conveying auger (Ø 45, 50.8 or 60 mm)
- ✓ feed pan Gladiator with rearing and growing pan bottom
- ✓ drive unit with sensor for automatic stopping of conveying auger
- ✓ hand winch for automatic flooding of all pans of a line
- ✓ suspension system with winch
- ✓ anti-roosting wire



The feed hopper can easily be detached from the bottom part for cleaning purposes. This allows the farm staff to hoist the entire feed line up to the ceiling and thus provides enough headroom for manure removal. The rugged drive unit and strong conveying auger are designed for a conveying length of up to 150 m. A sensor inside the control pan switches off the line automatically when all pans are filled.

## Manual or automatic flooding feature

The flooding feature ensures a high feed level in the pan so that especially the day-old poults have direct access to the feed in the pan.

For manual flooding of individual pans, the feed level in each pan can be adjusted in seven different positions.

All pans can also be adjusted centrally (optional). In this case a cable is fixed to the anti-roosting wire and the pans can then be flooded automatically by means of a hand winch.



Automatic flooding feature

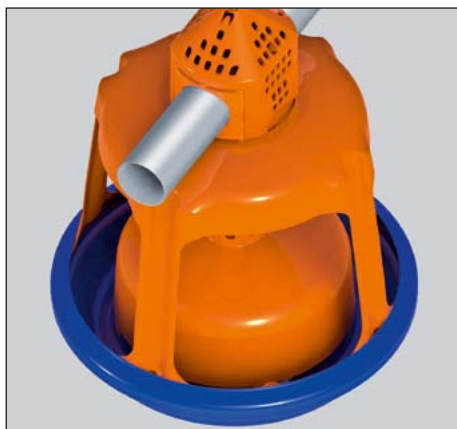


Flooded Gladiator for ideal poult starting



# growing of turkeys up to a weight of 25 kg

## Starter cone for clean feed



As a rearing option, there is a detachable starter cone in combination with a special pan bottom available. The starter cone keeps poults from climbing into the pan for feeding during the first two weeks. Thanks to the cone, the feed stays clean and the risk of coccidiosis is minimised.

Weights in the flooding mechanism prevent the pan from being flooded accidentally by the birds

## Low feed level in the growing pan



## Gladiator – the advantages at a glance

### Screwless snap-on system

- > simple assembly and disassembly
- > individual pans can be installed or taken apart subsequently without problems

### 4 Grill bars

- > easy access to the feed
- > good illumination of the pan
- > rugged design

### Rounded high pan rim

- > prevents breast injuries
- > minimises feed wastage during the growing phase

### Cleaning openings for better hygiene

### Weighted flooding unit with anti-scratch ring and 8 wings

- > birds cannot flood the pan accidentally
- > minimises feed wastage

### Open design of tube connection

- > reduced number of hidden hollow spaces for better hygiene and more thorough cleaning

### Freely swinging feed pan; rotating pan and grill

- > prevents breast injuries
- > protects the entire feed line
- > facilitates cleaning thanks to rotating pan

### Precise feed level adjustment

- > simple adjusting of the feed level

### Opening mechanism

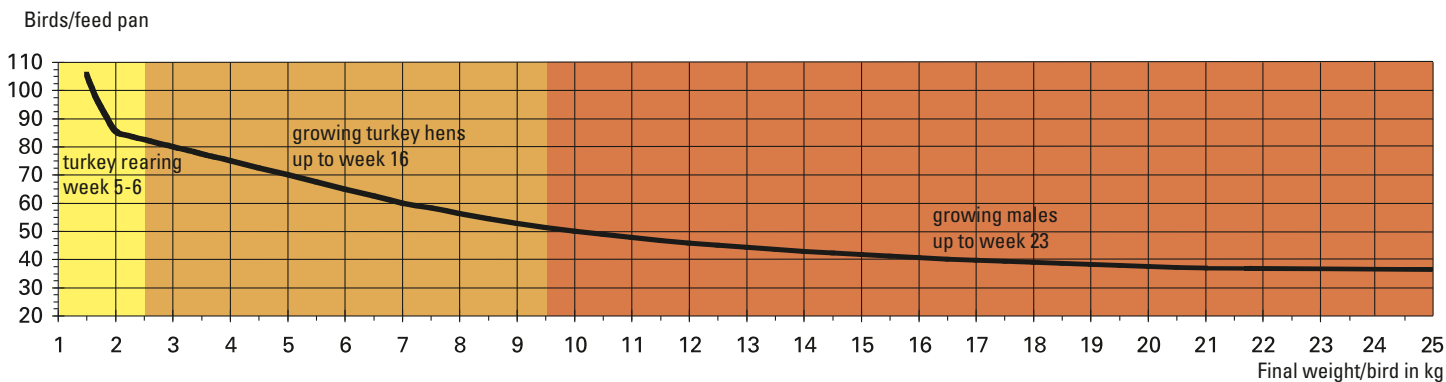
- > easy-to-operate
- > reduced work when changing the pan bottom or cleaning



In the rearing phase, the small pan bottom (Ø 395 mm) is used. Afterwards, the turkeys are either moved to a growing house or, in single-phase growing, the small pan bottom is simply replaced by a larger pan bottom (Ø 470 mm). Thanks to the snap lock, this is easily possible.



# Guideline values for the number of birds per feed pan



The numbers shown in the diagram are guideline values and may differ depending on the breed, stocking density and climate conditions. Please also contact your bird supplier. Also consider different local directives and regulations that might apply.



Rearing and growing of hens



Final growing of hens/male growing

## Technical specifications for the Augermatic system

- feed hopper content approx. 115 l / 75 kg
- extension for feed hopper content approx. 48 l / 31 kg
- max. system length 150 m
- feed tube with 1, 2, 3 holes Ø 45, 50.8 or 60 mm
- installation length 3000 mm + sleeve
- drive unit with gear motor 0.55/0.75 kW, 230/400 V, 50 Hz, 3 ph, 320 rpm  
special voltages upon request
- capacity approx. 450 kg/h
- pellet size up to 4 mm
- suspension central ceiling winch, manual or with motor

### We recommend:

Big Dutchman supplies not only the right feeding and drinking system, but our product portfolio also includes optimal solutions for the house climate, including computer control systems. Our experts will be happy to create a customised housing concept fully adapted to your needs.



# Big Dutchman

Germany:  
**Big Dutchman International GmbH**  
 Postfach 1163 · 49360 Vechta  
 Tel. +49(0)4447 801-0 · Fax -237  
 big@bigdutchman.de  
 www.bigdutchman.de

**USA: Big Dutchman, Inc.**  
 Tel. +1 616 392 5981 · bigd@bigdutchmanusa.com  
 www.bigdutchmanusa.com

**Brasil: Big Dutchman (Brasil) Ltda.**  
 Tel. +55 54 2101 5900 · bigdutchmanbrasil@bigdutchman.com.br  
 www.bigdutchman.com.br

**Russia: 000 "Big Dutchman"**  
 Tel. +7 495 2295 171 · ikotov@bigdutchman.ru · www.bigdutchman.ru

**Asia and Pacific region: BD Agriculture (Malaysia) Sdn. Bhd.**  
 Tel. +60 3 33 61 5555 · bdasia@bigdutchman.com · www.bigdutchman.com

**China: Big Dutchman (Tianjin) Livestock Equipment Co., Ltd.**  
 Tel. +86 10 6476 1888 · bdcnsales@bigdutchman.com  
 www.bigdutchman.cn